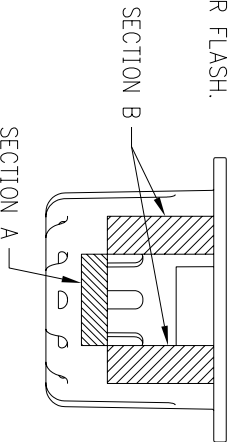


# HS25A/HS35A/HS35M PROTECTIVE GUARD INSTALLATION

## READ ALL INSTRUCTIONS BEFORE PROCEEDING WITH INSTALLATION

1) THE PROTECTIVE BASKET GUARD MAY BE INSTALLED OVER ANY OF THE MODELS LISTED BY THE USE OF "BREAK-OUT" SECTIONS ON THE GUARD. DETERMINE WHICH MODEL THE GUARD WILL BE PLACED OVER, THEN USING SIMPLE HAND TOOLS SNAP OUT THE APPROPRIATE SECTION(S). USE A KNIFE OR FILE TO REMOVE ANY SHARP EDGES OR FLASH.

MODEL	SECTION TO BE REMOVED
HS25A	A
HS35A	NONE
HS35M	B (2 PLACES)



2) FOR INSTALLATION OF THE PROTECTIVE GUARD, ENCODER TETHER MUST BE INSTALLED AS SHOWN IN FIG. 1. (FIG. 1a IS PREFERRED, AS IT ALLOWS THE GUARD TO BE MOUNTED WITH 3 BOLTS. FIG. 1b ALLOWS GUARD TO BE SECURED WITH ONLY 2 BOLTS).

3) AFTER ENCODER IS INSTALLED, PLACE THE PROTECTIVE BASKET GUARD OVER THE ENCODER WITH THE LARGER OPENING OVER THE OUTPUT TERMINATION AND THE SHALLOW OPENING OVER THE TETHER. ENSURE THE GUARD IS PROPERLY SEATED ON THE MOUNTING FACE AND SECURE WITH HARDWARE PROVIDED. SEE FIGS. 2, 3 OR 4.

